

# APARTMENT FILIPPO

隐于城的多彩生活

设计 / Alexander Fehre, Ralf Jander, Dirk Wissmann

摄影 / Studio Alexander Fehre 编译 / 范嘉苑 美编 / 张萍萍

项目地址 英国 伦敦

项目面积 45m<sup>2</sup>

设计单位 Studio Alexander Fehre





Alexander Fehre  
德国Alexander Fehre创始人兼主设计师

这套45平米的小公寓位于英国伦敦，距离伦敦塔桥只有15分钟的距离，Studio Alexander Fehre近期给这套公寓进行了全面的改造。设计团队根据业主需求对这个小空间做出合理的功能规划，并尝试在保证实用性的基础上加入一些创意设计。例如与众不同的厨房空间不仅成为了这间公寓的醒目一角，同时融入了更多的功能性，而其他空间也得到了进一步的优化。虽然公寓只有45平米，但是功能齐全且设计精致，足以让业主在伦敦这座城市获得惬意舒适的生活体验。

要在伦敦市中心找一套价格实惠的房子很难，而这也导致了这座城市的大多数公寓以小户型为主，所以选择一个合适的室内设计方案变得尤为重要。在设计之初，设计团队首先分析了这个空间所需涵盖的所有功能和必备条件，精确至每平方米，力求利用好每一处空间。经过考量后，设计团队决定重新划分空间布局，将客厅、厨房及小玄关融合为同一空间，而隐私区域及其他功能区域则位于另一侧。

起居空间铺设了黑色的人字型镶木地板，给公寓奠定了一份时尚而沉稳的调性。该区域中最引人注目的空间要数餐厨区，餐厅被挪至厨房最里侧的靠窗位置，并通过挪高窗户以让住户获得更好的观景视野，而一抹醒目的华伦天奴红则点亮了原先不起眼的小角落，除了就餐以外，这里也是一处惬意的休息场所。墙纸上的图案由一个个黑色小半圆组成，与红色桌椅搭配形成鲜明的视觉冲击力，一盏金色吊灯从天花垂挂而下更是成为了这个小空间的点睛之笔。厨房里放置了一大面由复合木板制成的开敞式橱柜，上面整齐地摆放了各种餐厨器具及食品，它从餐厅一直延伸至客厅，巧妙地连接起两个空间，住户可以根据需求来开启或关闭厨房与客厅之间的滑门。

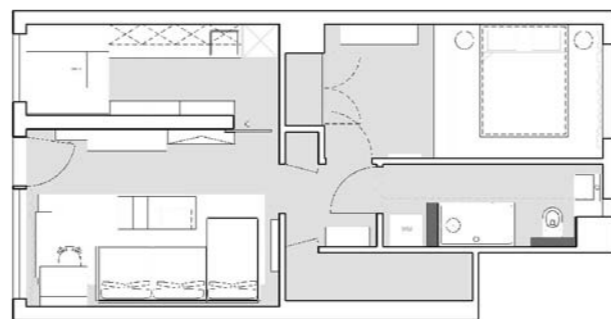
客厅里摆放了一张大号的橙红色L型沙发，并搭配深木色的分层茶几，而天花板上的吊灯底座采用了镜面设计，形成鲜亮的视觉效果，整体空间富有出一种休闲且雅致的调性。由于卧室空间比较狭小，所以设计团队采用了阶梯平台的布局以拓展空间的层次感。床具放置于靠近窗户位置的平台顶层，部分墙面被粉刷成了深紫色，与白色的墙柜及天花形成对比，营造出宁静的睡眠氛围。浴室格局狭长，相对于拓宽空间，设计团队认为强调其纵深度的设计方案更合适，通过将镜子、墙纸以及灯光组合搭配，以延伸浴室空间的视觉深度，而棕榈树的墙纸图案则营造出一种热带风情般的气息。虽然公寓面积不大，但经过Studio Alexander Fehre的改造后显得宽敞了不少，成功打造出了一套富有现代感的都市小户型公寓。





A flat only 15 minutes from Tower Bridge has been completely redesigned by Studio Alexander Fehre. Intelligent use of this small space was guided by the owner's living needs. An unusual kitchen solution freed up space in the living area, while integrating much greater functionality. It all goes to show that 45 sqm in London can definitely be enough of a good thing.

In London's over-valued property market you hear a lot about large, exclusive flats that symbolise the constant struggle to find affordable housing close to the city's centre. Smaller flats however make up the large majority of the city's housing and can benefit to a much greater degree from considered interior planning. With Filippo's flat, we began by analysing the exact functions and requirements that the space should fulfil with the objective of exploiting every last square centimetre to the full. We determined that redistributing the flat's layout would make a



平面布置图

big difference, merging the living room, kitchen and small hallway to create one space.

A black fishbone parquet floor brings a sense of clarity and cohesion to this spatial layout. The dining area was moved into the kitchen and takes the form of a cosy sitting area painted in Valentino red. The semi-circular, banded wallpaper defines the dining area as a separate small space. The existing kitchen window set high in the wall and the narrow width of the room combine to make the sitting area seem as if it had always been there. Opposite the cleanly designed kitchen stands an open shelving unit made from veneered multiplex, which stretches through into the living room. It serves to connect both areas, while a sliding door can be closed to separate them if desired.

Thanks to a large, L-shaped sofa, stepped table and circular mirror, the living area possesses a very striking lounge-like atmosphere. The bedroom is very narrow, so a platform was constructed that stretches from wall to wall. The bed is positioned on top, thereby structuring the room and making it easier to reach the rear window. The walls are painted a deep purple, contrasting beautifully with the wall-mounted shelving units. In the bathroom a conscious decision was made not to attempt to widen it, instead emphasising the length of this space through a combination of mirror, wallpaper and downlights. Although spaciousness is in the eye of the beholder, Studio Alexander Fehre presents a succinct, contemporary solution to the issue of progressive urbanisation. **M**